
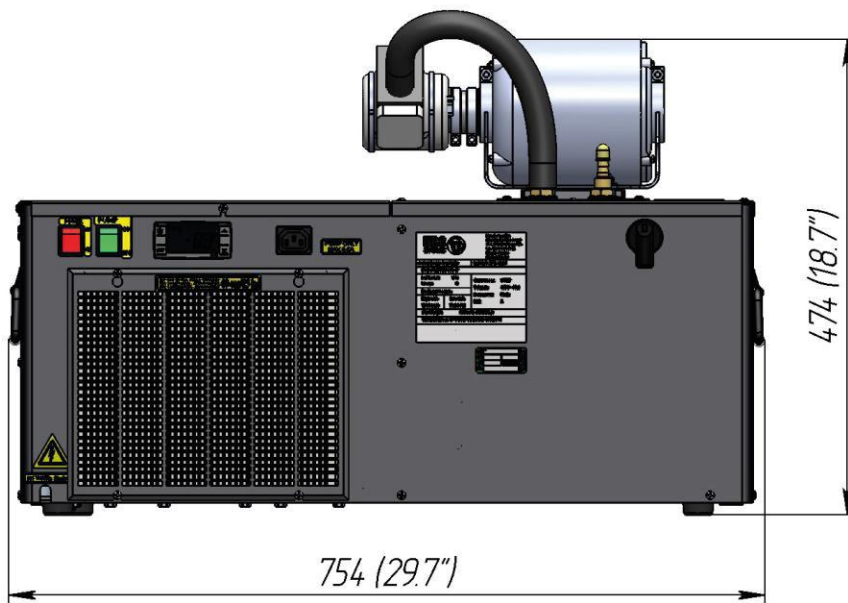


Specifications

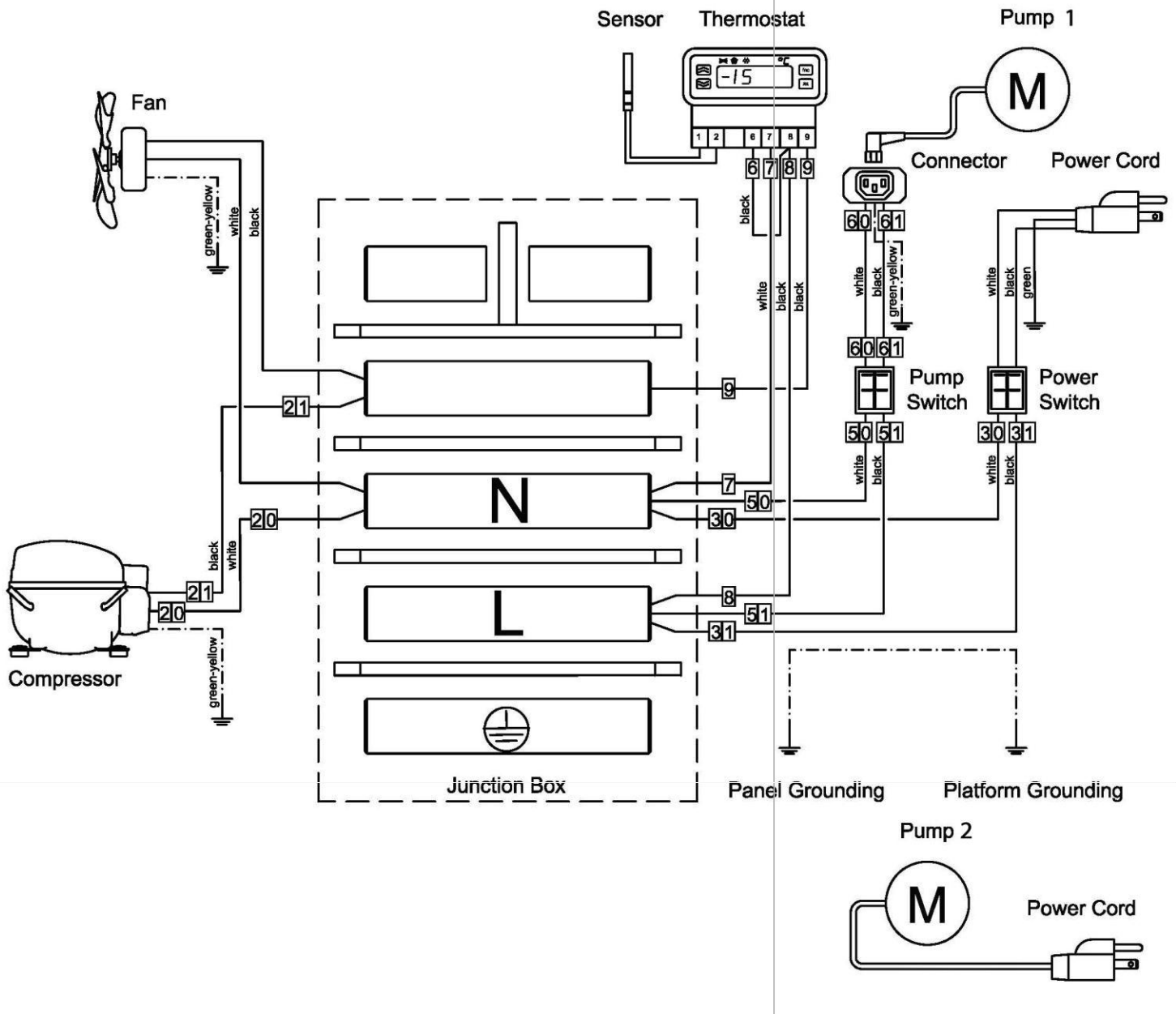


| | |
|----------------------------------|---|
| Internal number | 148.00.000.00-XX |
| Part number | CP-3200H-2-GP |
| Maximum distance, ft | up to 125 |
| Capacity, BTU/h, evap 20 F | 3200 |
| Glycol tank capacity, gal | 5.8 |
| Compressor power, hp | 3/8 |
| Dedicated circuit, amp | 20 |
| Plug type (NEMA #) | 5-20P  |
| Voltage, V / frequency,Hz | 115 / 60 |
| Pump type | Vane with 1/3 hp motor |
| Pump, GPH | 80 |
| Number of pre-installed pumps | 2 |
| Number of additional pumps | n/a |
| Refrigerant | R290 |
| Width, in | 29.7 |
| Depth, in | 18.5 |
| Height, in | 18.7 / 24 (on optional legs) |
| Weight gross/net, lb | 118 / 107 |
| Power cord length,ft | 6 |
| Inlet/Outlet barb, in | 3/8 |
| Operating ambient temperature, F | 60-90 |
| Clearanceat least | 12"around the entire unit |
| Glycol mixture, vol% | 40 % glycol and 60% water |

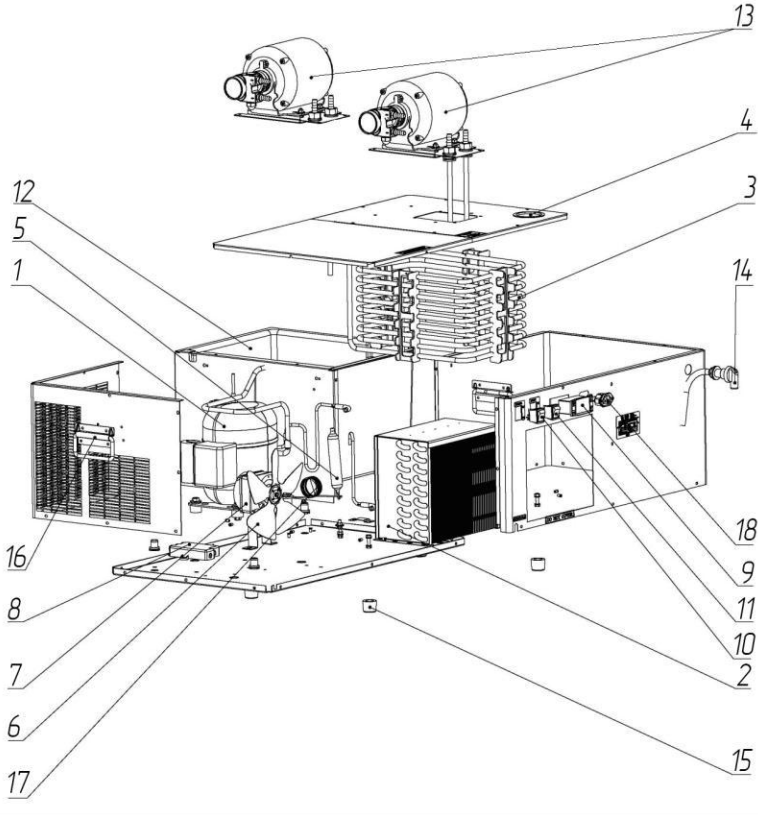
Overall dimensions



Wiring diagram



Parts



| | |
|----|--|
| 1 | Compressor "Cubigel" NLY90RRa(115 -127V/60Hz)or "Secop" NLE8.8CN (115 -127V/60Hz) |
| 2 | Aircondenser "KARYER" B-18143UL |
| 3 | Evaporator |
| 4 | Cap |
| 5 | Filter-drier "DE-NA" GR-15d6.1xd6.1xd2.5 |
| 6 | Impeller Ø200 mm., $\alpha=28^\circ$ |
| 7 | Electric motor "ELCO" NU9 -20-2/094(115V/50 - 60Hz)UL "WGMotors" YZF10 -20-26(10W)(110 - 120V/60Hz)or "EBM" M4Q045 -CA-27-04 (115V/60Hz) |
| 8 | Terminalblock "ITWE LETTROGIBI" PA104 |
| 9 | Thermostat "DIXELL" XR02CX -4N0F1(115V/60Hz) |
| 10 | Powerswitch "ARCOLECTRIC" C6053ALBR(Red) |
| 11 | Powerswitch "ARCOLECTRIC" C6053ALBG(Green) |
| 12 | Glycolbath |
| 13 | Glycolpump «FLUID -O-TECH» PA 2501 or "PROCON" 102A080F11BA250, and motor "MARATHON" 5KH32FN5586MX (115V/60Hz) or "UBC" YU250-4G01 (100-120V/200-240V-50/60hz) |
| 14 | Overflow |
| 15 | Foot |
| 16 | Handle |
| 17 | Capillarytube 2.4x0.575x1800mm |
| 18 | Connector R302SN 250V10A |