



# 2019 TOWERS CATALOG

## CONTENTS ОГЛАВЛЕНИЕ

<b>2</b>	<b>ABOUT US</b> О компании
<b>3</b>	<b>CERTIFICATION</b> Сертификаты
<b>6</b>	<b>TERRA</b> Терра
<b>10</b>	<b>ARCADA</b> Аркада
<b>14</b>	<b>PERSEY</b> Персей
<b>18</b>	<b>GEFEST</b> Гефест
<b>22</b>	<b>NOT STANDARD COLUMNS</b> Не стандартные колонны
<b>32</b>	<b>FROST TOWERS</b> Снежные колонны
<b>36</b>	<b>METAL TOWERS</b> Металлические колонны
<b>42</b>	<b>CERAMIC TOWERS</b> Керамические колонны
<b>44</b>	<b>EXCLUSIVE TOWERS</b> Эксклюзивные колонны
<b>44</b>	<b>PREMIUM TOWERS</b> Премиум колонны
<b>45</b>	<b>CLASSIC TOWERS</b> Классические колонны
<b>46</b>	<b>ACCESSORIES</b> Комплекующие
<b>47</b>	<b>CERAMIC TAP HANDLES</b> Рычаги для пивных кранов

<b>55</b>	<b>Wooden tap handles</b> Деревянные рычаги
<b>56</b>	<b>BEER TAPS</b> Пивные краны
<b>57</b>	<b>MEDALLIONS</b> Медальоны
<b>59</b>	<b>DRIP TRAYS</b> Каплесборники
<b>60</b>	<b>DRIP TRAY</b>
<b>61</b>	<b>CLAMP</b>
<b>64</b>	<b>NOTES</b> Для заметок



*UBC Towers is a subsidiary of UBC Group which develops and produces beer and beverage fonts and various accessories for them.*

*UBC Towers - подразделение UBC Group, занимающееся разработкой и производством пивных колонн, колонн для напитков и различных аксессуаров к ним.*

*Proven quality of UBC products is well-known in Europe, North and South America, Asia, and Africa.*

*Продукция UBC надежно работает в Европе, Северной и Южной Америке, в Азии и Африке.*

*The factory is situated in the city of Kharkov, Ukraine. There are around 1000 employees working at the factory; the area of the factory is 55000 sq. m.*

*Завод расположен в г. Харькове, Украина. На предприятии работает около 1000 человек, задействованные производственные площади более 55000 кв. м.*

*UBC business model is based on building open and honest relationships with customers and consistently providing high-quality products and services.*

*Залогом успеха UBC является честное и открытое ведение бизнеса с нашими партнерами, обеспечение стабильно высокого уровня качества продукции и сервиса.*

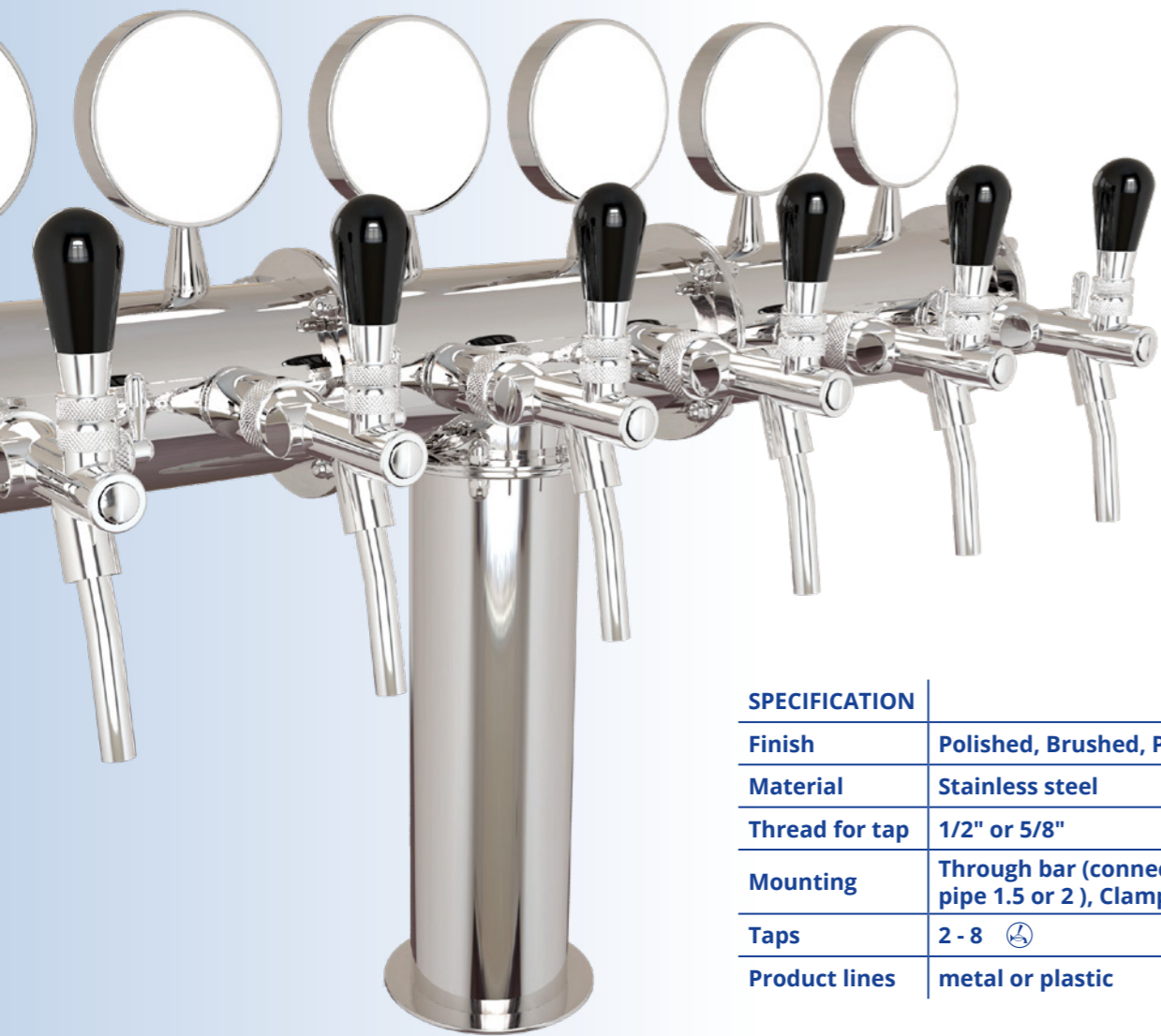
*Our strategy is innovativeness and quick reaction to the customer's needs.*

*Наша стратегия - инновационность и быстрая реакция на потребности клиента.*





# TERRA



SPECIFICATION	
Finish	Polished, Brushed, Powder paint
Material	Stainless steel
Thread for tap	1/2" or 5/8"
Mounting	Through bar (connecting pins M6, pipe 1.5 or 2), Clamp-on bar*
Taps	2 - 8
Product lines	metal or plastic

## SURFACE OPTIONS:



## ILLUMINATION



no flange



flange 1



flange 2

## Through bar



connecting pins M6



pipe 1.5"



pipe 2"

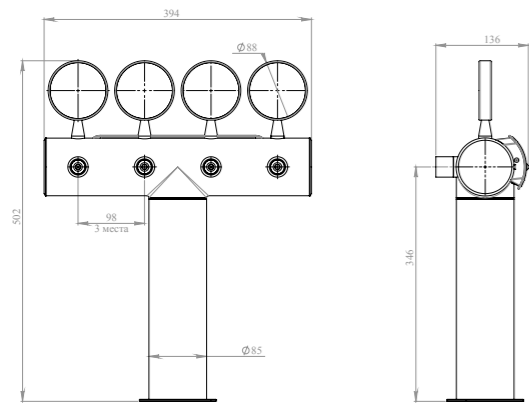
## Clamp-on bar



connecting pins M6

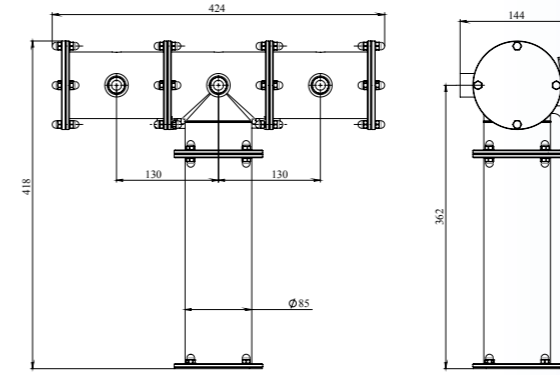


# TERRA

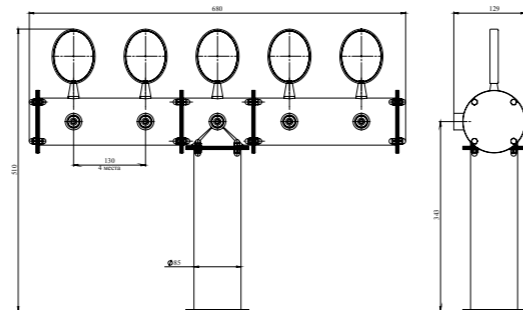


TR230-4-PSS-NF

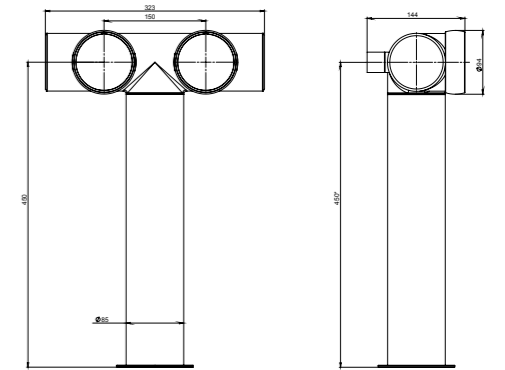
# TERRA



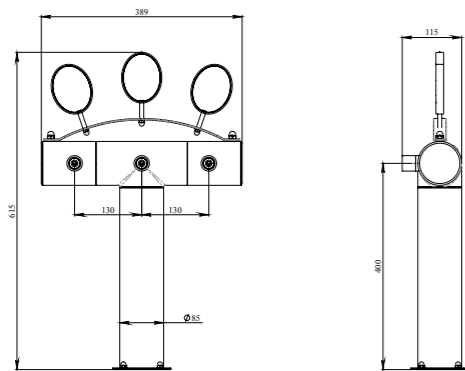
TR244-3-BER-F



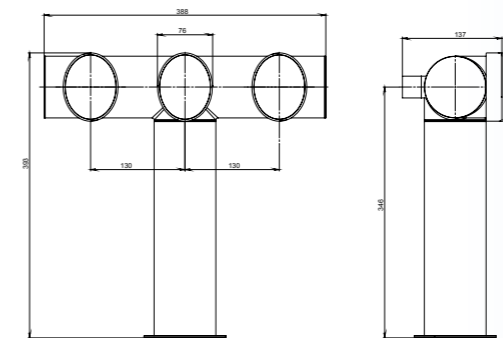
TR211-5-PC-F



TR188-2-SSS-NF



TR224-3-BrEP-NF



TR244-3-PPG-NF



# ARCADA



SPECIFICATION	
Finish	Polished, Brushed, Powder paint
Material	Stainless steel
Thread for tap	1/2" or 5/8"
Mounting	Through bar (connecting pins M6, pipe 1.5 or 2), Clamp-on bar* 2 or 8
Taps	2 - 8
Product lines	metal or plastic

### SURFACE OPTIONS:



no flange      flange 1      flange 2



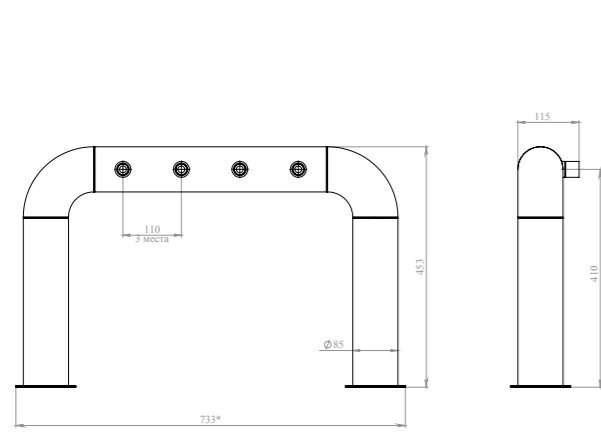
pipe 1.5"      pipe 2"



connecting pins M6

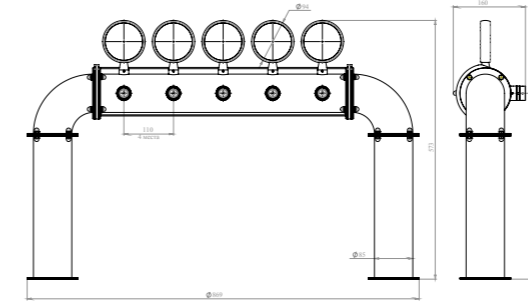


# ARCADA

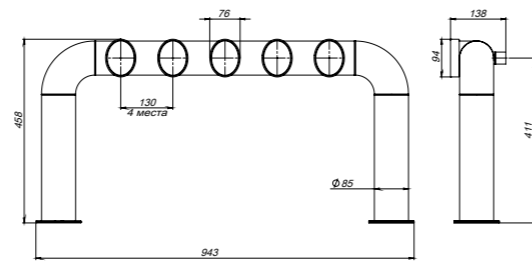


3-6 AR204-4-BER-NF

# ARCADA

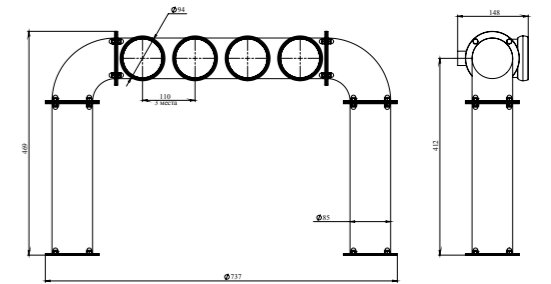


4-14 AR205-5-PSS-F



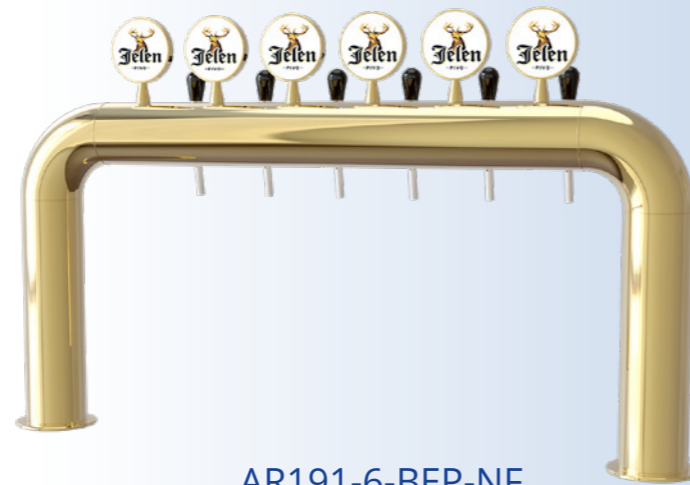
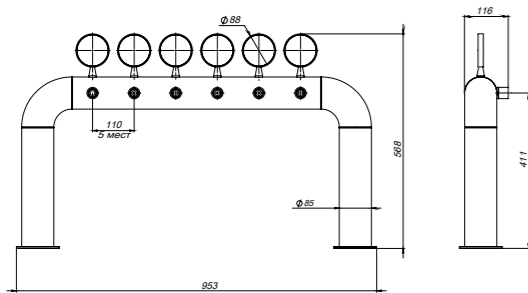
AR205-5-BrEP-NF

3-6



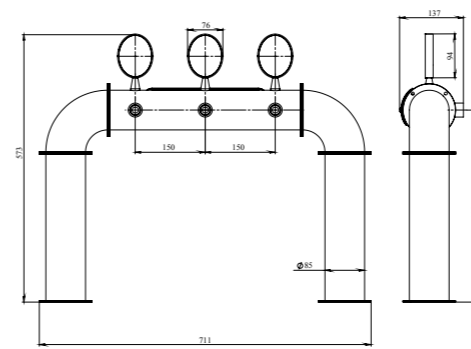
AR204-4-PC-F

4-14



3-6 AR191-6-BEP-NF

AR191-6-BEP-NF




4-14 AR167-3-BEP-F

AR167-3-BEP-F

# PERSEY



SPECIFICATION	
Finish	Polished, Brushed, Powder paint
Material	Stainless steel
Thread for tap	1/2" or 5/8"
Mounting	Through bar (connecting pins M6, pipe 1.5 or 2 ), Clamp-on bar*
Taps	2 - 5 
Product lines	metal or plastic



no flange

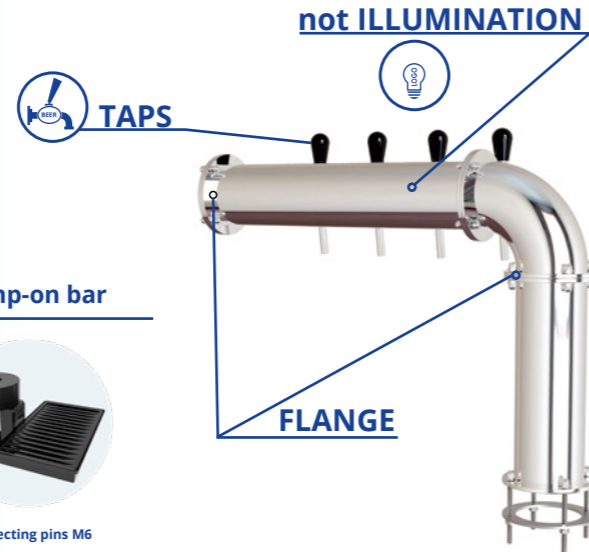


flange 1



flange 2

## SURFACE OPTIONS:



## Through bar



connecting pins M6

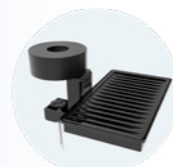


pipe 1.5"



pipe 2"

## Clamp-on bar

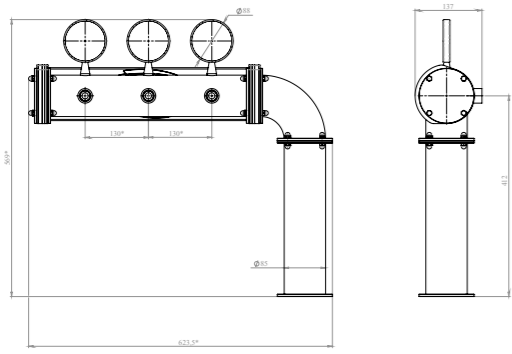


connecting pins M6



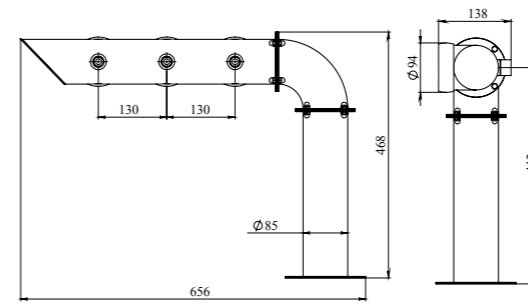


# PERSEY



2-5

P189R-3-PSS-F



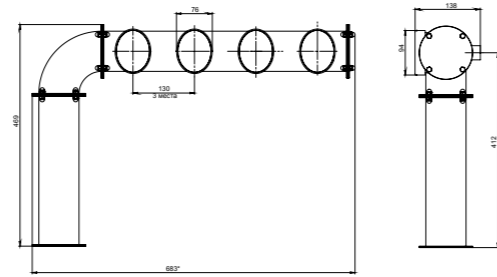
2-5



P189R-3-PC-F



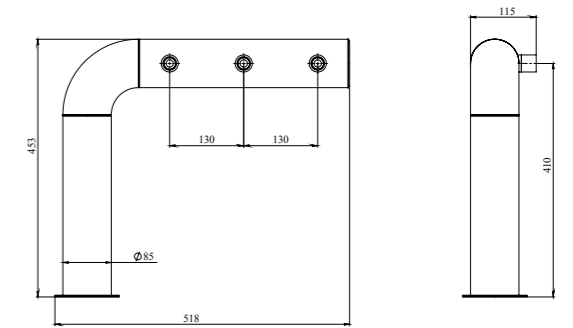
P190-4-PC-F



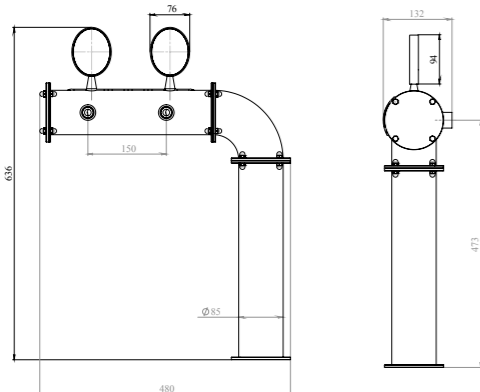
2-5



P189L04-4-PC-F



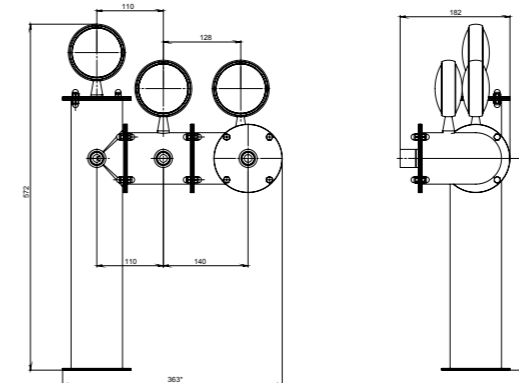
2-5



P249R-2-PSS-F



2-5



2-5



PS189-3-PSS-F



PS189-3-PSS-F

# PERSEY



**SURFACE OPTIONS:**



**Bottom of column**



SPECIFICATION	
Finish	Polished, Brushed, Powder paint
Material	Stainless steel
Thread for tap	1/2" or 5/8"
Mounting	Through bar (connecting pins M6, pipe 1.5 or 2 ), Clamp-on bar*
Taps	1 - 3
Product lines	metal or plastic

**Through bar**



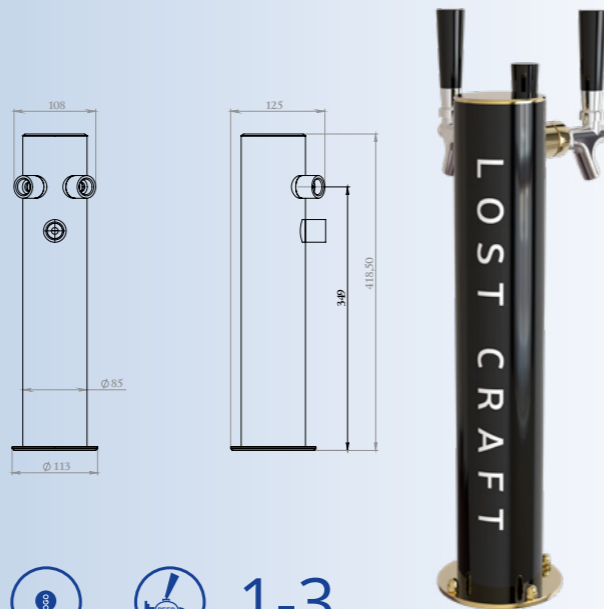
**Clamp-on bar**



# GEFEST



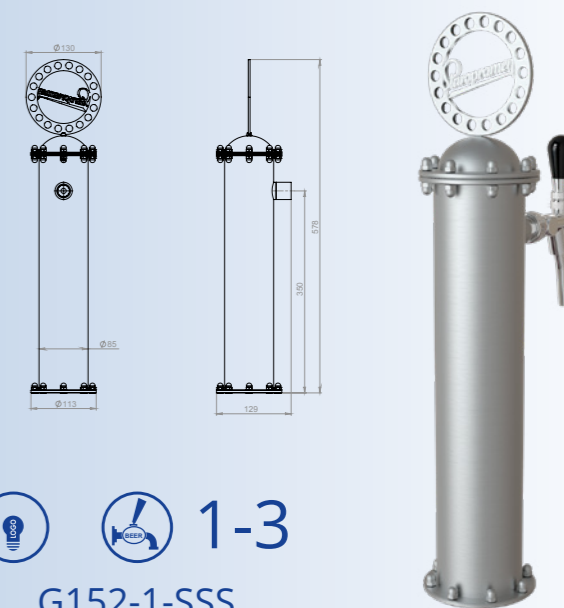
**1-3**  
 G151-1-PSS-F



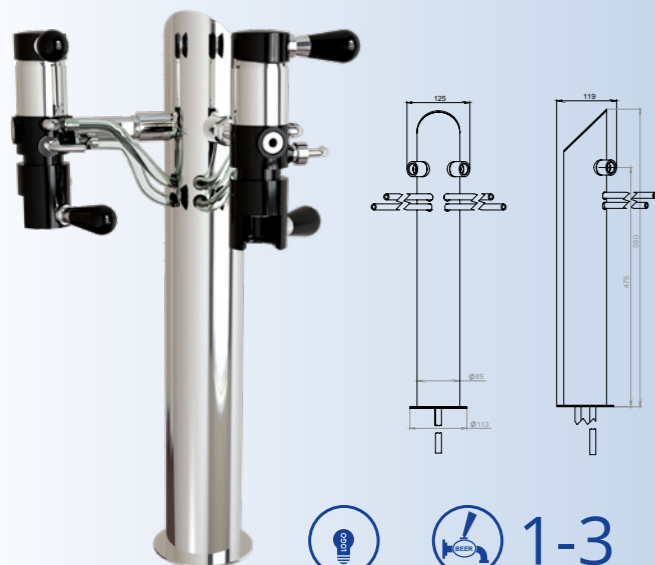
**1-3**  
 G152-3-PSS-F



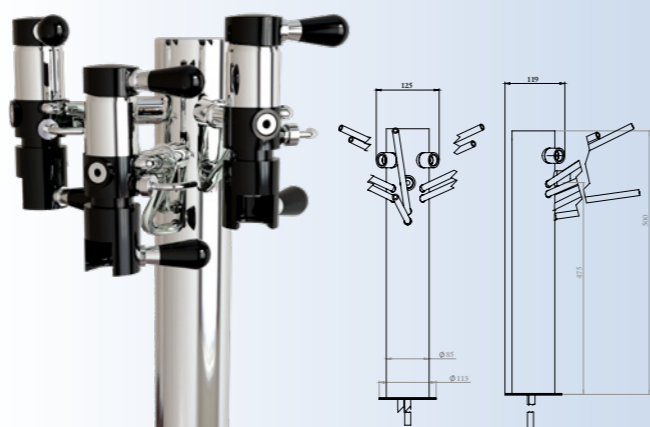
**1-3**  
 G151-1-SSS-F



**1-3**  
 G152-1-SSS



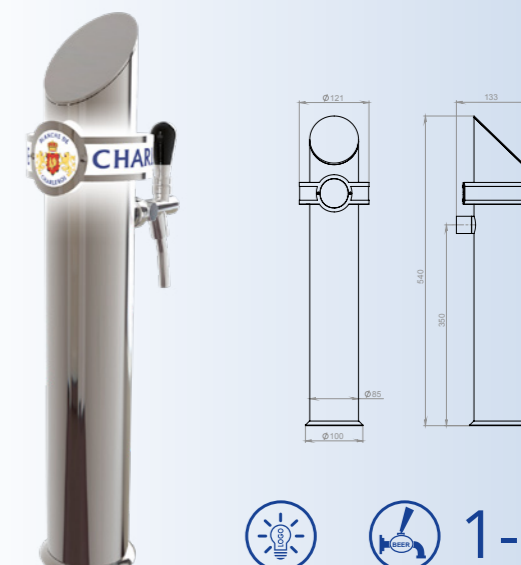
**1-3**  
 G152-2-PSS-F



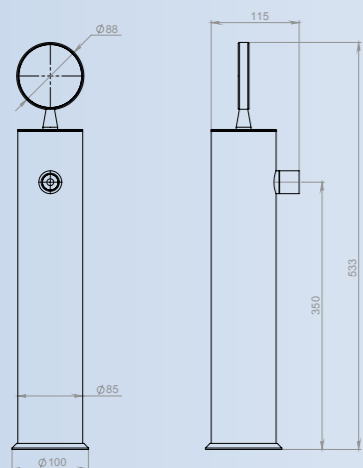
**1-3**  
 G154-3-PSS-F



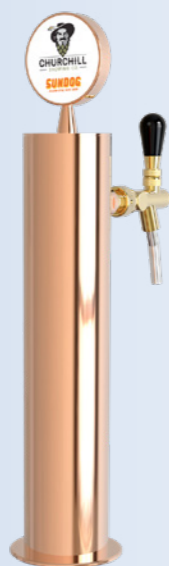
**1-3**  
 G151-1-PSS-NF-Wood



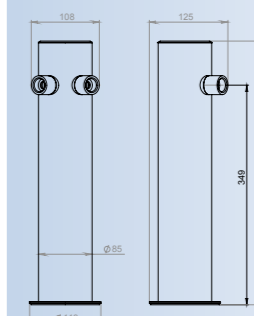
**1-3**  
 G151-1-PSS-NF



**1-3**  
 G152-1-PSS-F



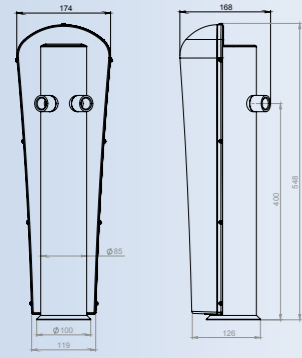
**1-3**  
 Gmini307-1-PSS-F



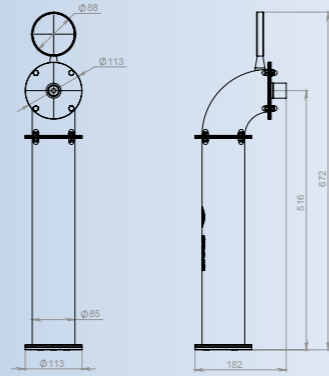
**1-3**  
 G152-2-PSS-F



# 1-2 PRODUCT LINE TOWER

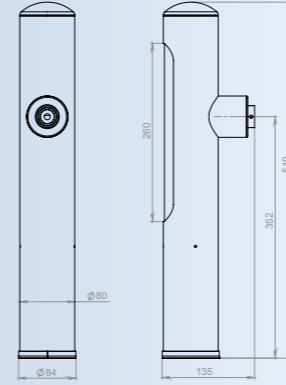


Light icon, Tap icon, 1-2  
G152-1-PSS

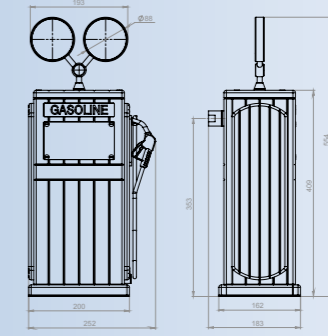


Light icon, Tap icon, 1  
G152-1-PSS-F

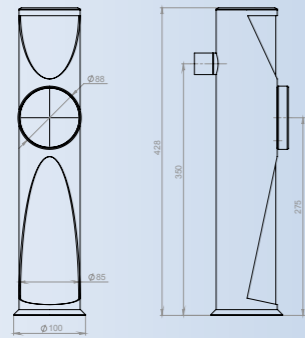
# 1-2 PRODUCT LINE TOWER



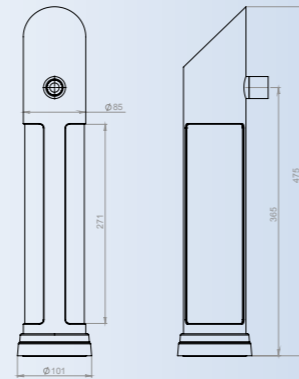
Light icon, Tap icon, 1  
KR106-1-PPtB



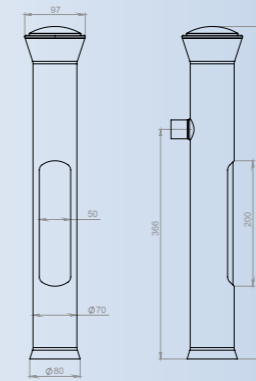
Light icon, Tap icon, 1-2  
EL310-1-Wood



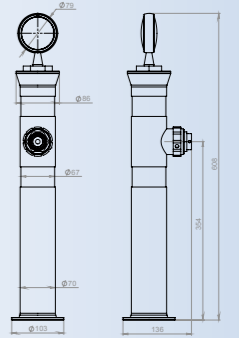
Light icon, Tap icon, 1-2  
LM152-1-PSS



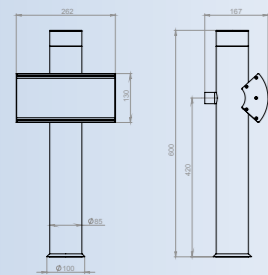
Light icon, Tap icon, 1-2  
IS174-1-PPtB



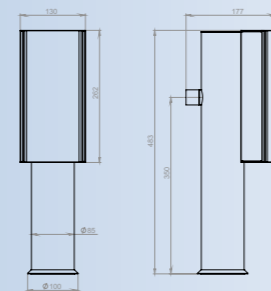
Light icon, Tap icon, 1  
PH304-1-PSS



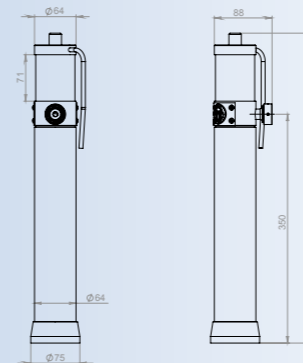
Light icon, Tap icon, 1  
G304-1-BrEP



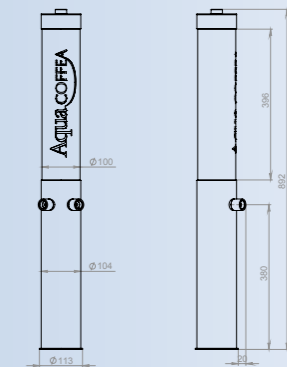
Light icon, Tap icon, 1-2  
G152-1-PSS



Light icon, Tap icon, 1-2  
G152-1-PSS-F

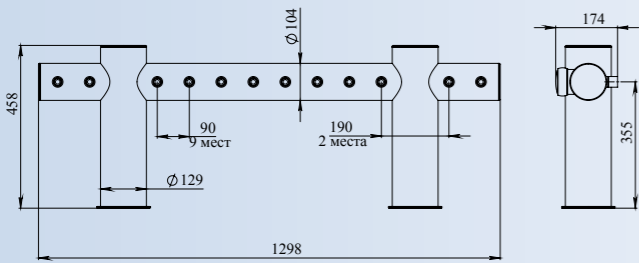
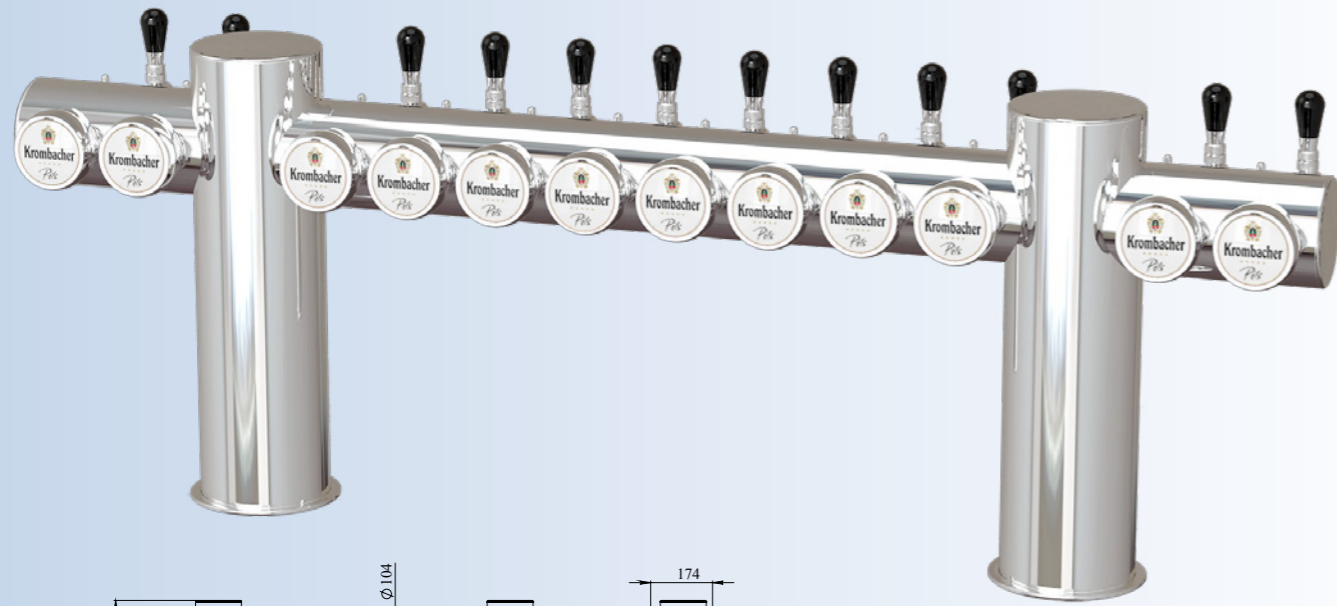


Light icon, Tap icon, 1  
KRI152-1-PSS-NF



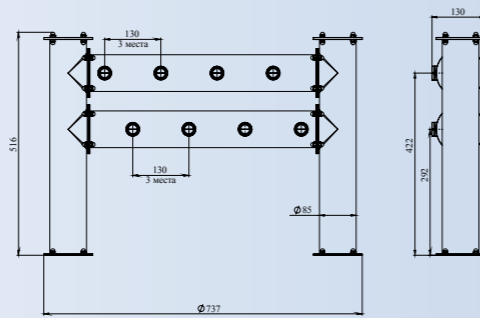
Light icon, Tap icon, 1-2  
AQ107-2-PSS

# BRIDGE



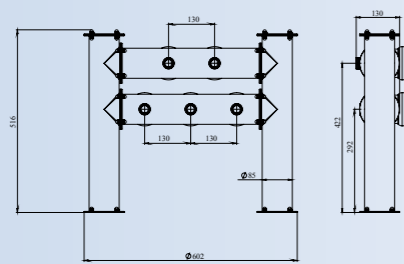
6-16  
BR292-12PSS

# DOUBLE BRIDGE



6-16

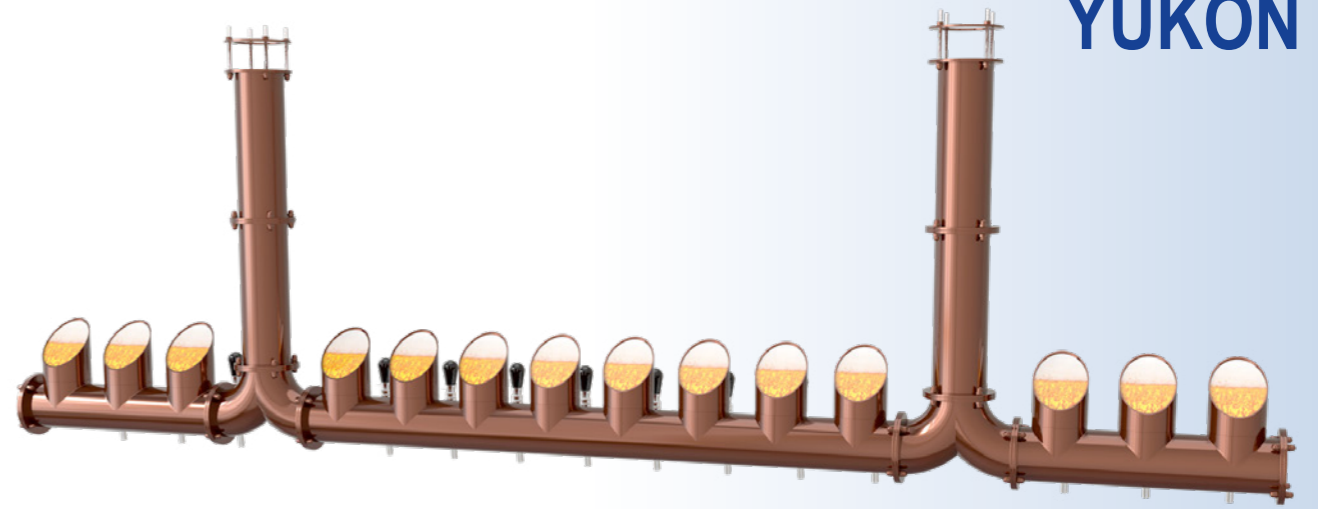
DBR269-8 PSS - F



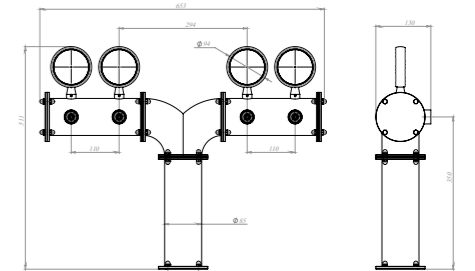
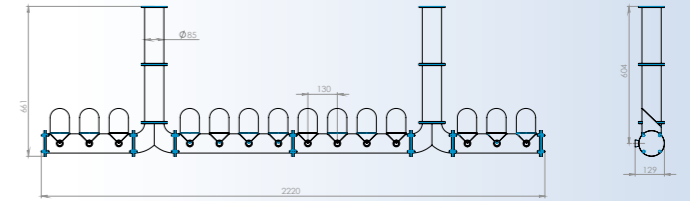
6-16  
Concept



# YUKON

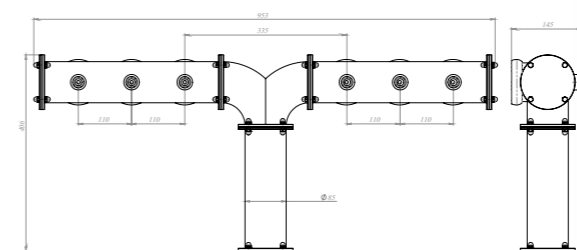
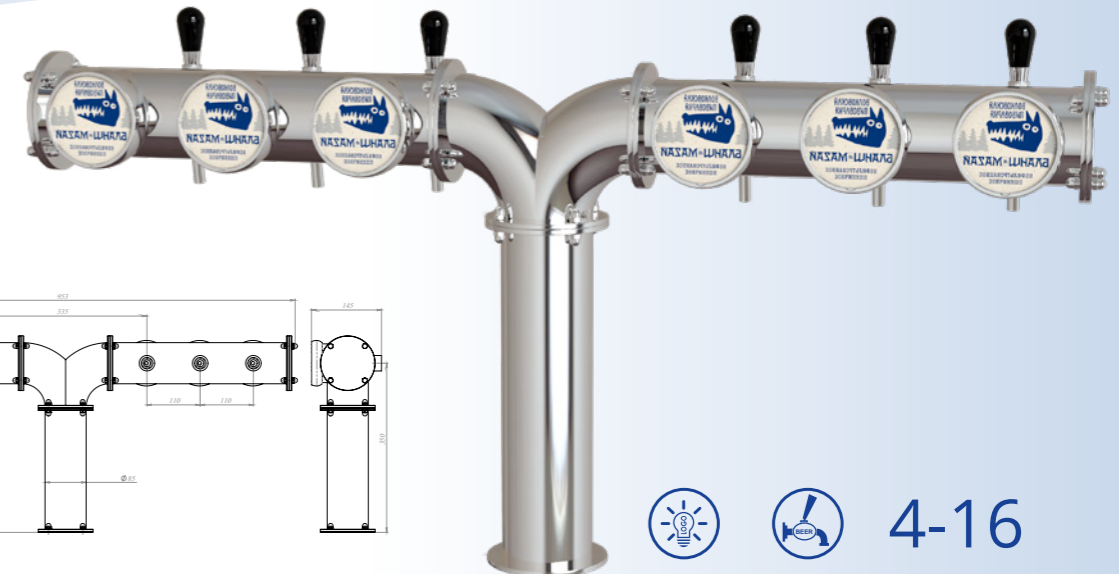


4-16  
Y286-14-BrEP-FC-F



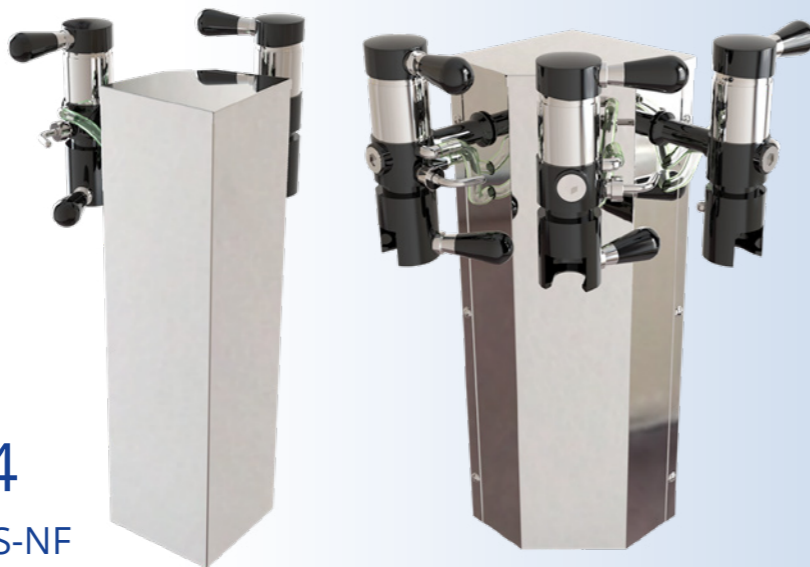
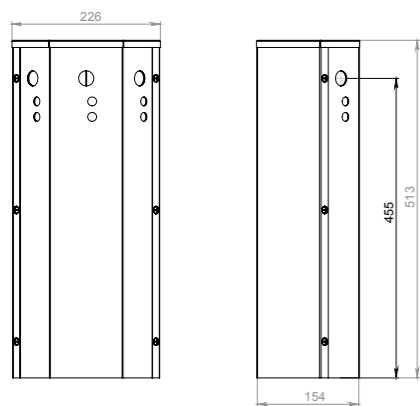
4-16

Y276-4-PSS-F



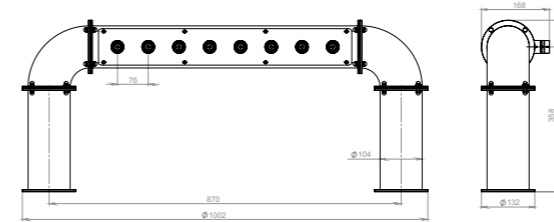
4-16  
Y278-6-PSS-F

# PRIZMA



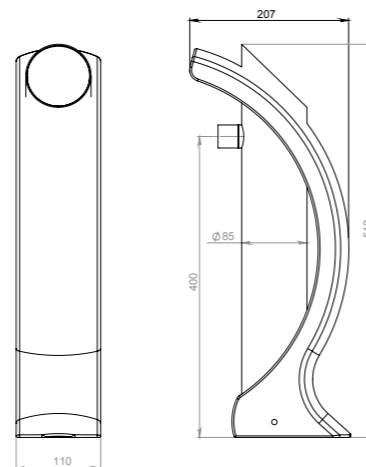
**2-4**  
 P303-3-PSS-NF

# 4 + PRODUCT LINE TOWER

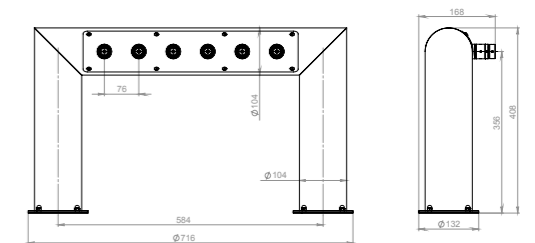


**Apollo**  
**6-14**  
 Apollo350.8-8-PC-F

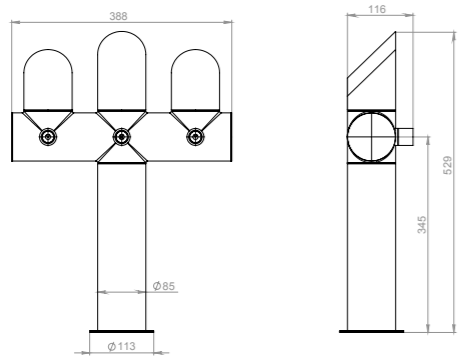
# QUEEN +



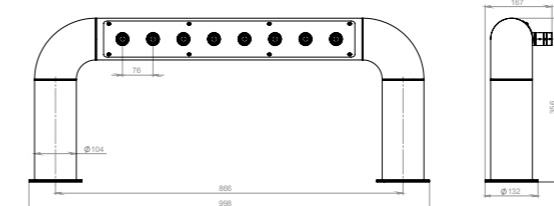
**1-5**  
 QND-2-PSS-NF



**Norma**  
**6-14**  
 Norma320-6-PSS-NF



**2-6**  
 QN196-3-PSS-NF



**Atlas**  
**6-16**  
 Atlas351.8-8-PSS-NF

# 4 + PRODUCT LINE TOWER

**Metro**

6-16  
Metro341-8-PSS-NF

**Box**

2-16  
Box200-5-SSS-NF

**Zorro**

4-6  
Zorro375R-5-PSS-NF

# VINTAGE

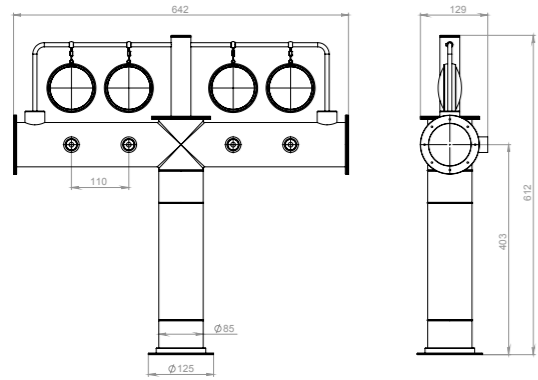
4-8  
AR205-5-BrEP-F

**Chopper**

3-5  
Chopper309-4-PSS-F

2-6  
TR188-2-BrEP-F

# VINTAGE





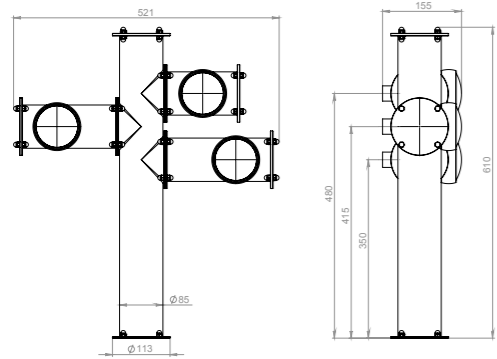
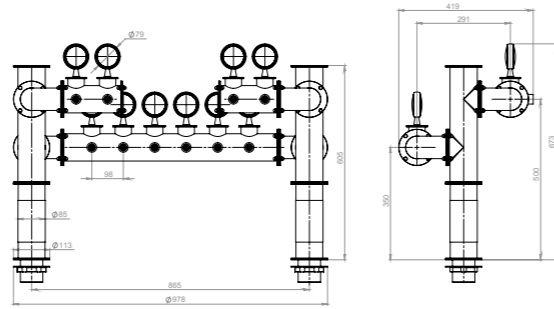
**2-6**  
 TR230-4-color-F



**Viaduc**



**5-10**  
 Viaduc289-10-color-F



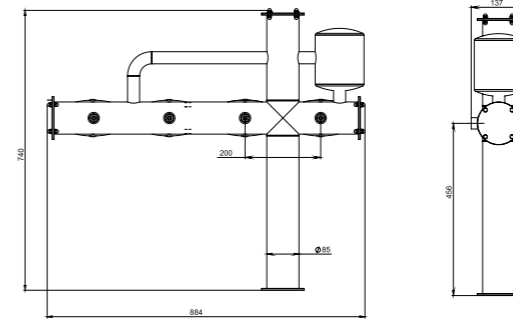
**Hydra**



**2-6**  
 GD319-3-BrEP-BEP-F



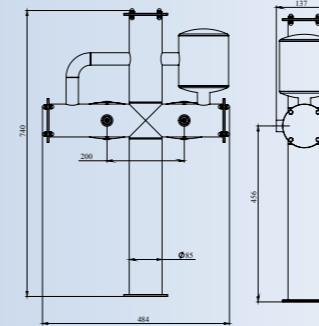
# DISPLAY TOWERS



**Cooper**



**2-4**  
 CP189R-3-PSS-F



**Neva**



**2-4**  
 Neva188-2-color-F



**Terra TV**



**2-4**  
 NV190-4-PC-F



Concept



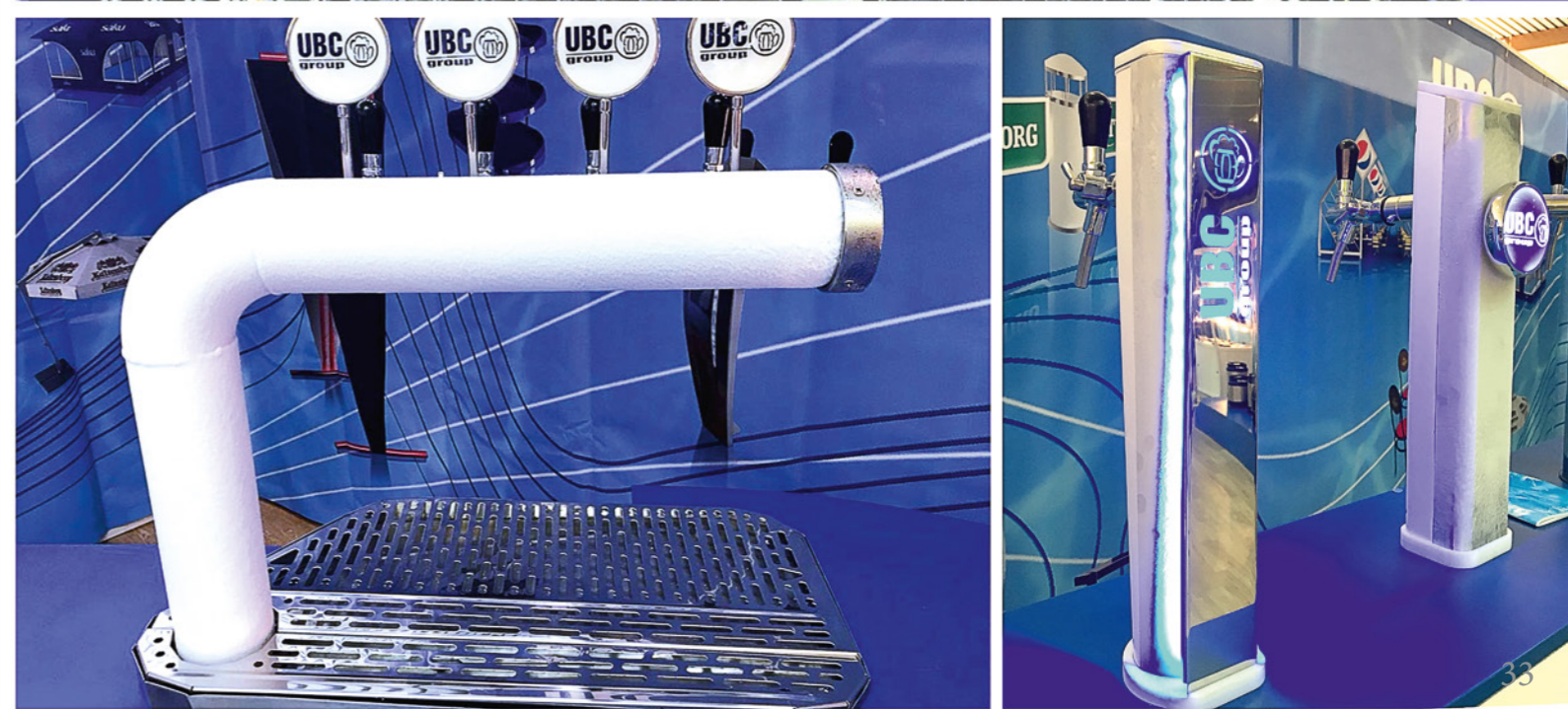
Concept



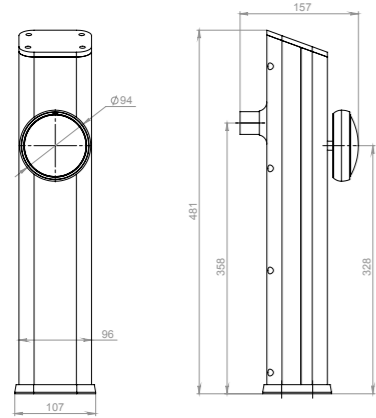
Concept



# FROST TOWERS



# FROST TOWERS

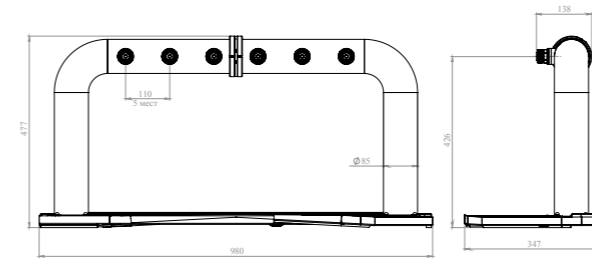


1  
ICEB315-1-frost-NF



**ICEBeers**

# FROST TOWERS

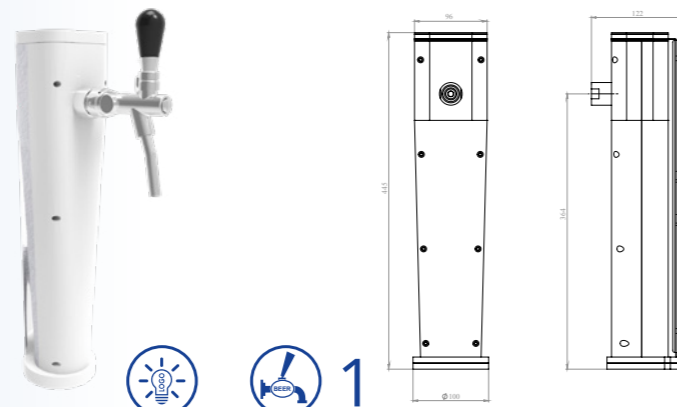


**AracadaICE-F**

4-6  
AR191-ICE-6-PC-NF



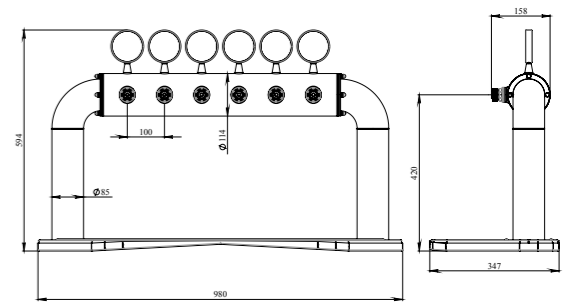
**PremierICE**



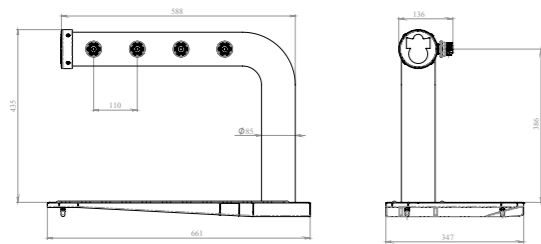
1  
ICEPR315-frost-1-NF



**AracadaICE-H**

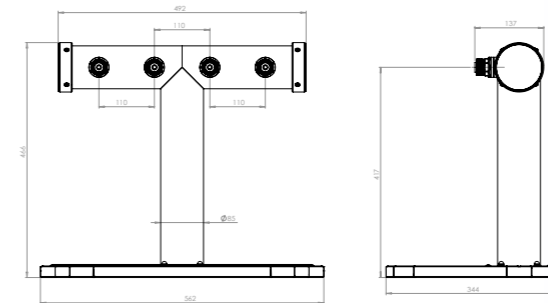


4-9  
AR191-ICE-6-PC



**PerseyICE**

2-4  
PS190-ICE-4-PSS



**TerraICE**

4-6  
TR230-ICE-4-PSS



# METAL TOWERS

## МЕТАЛЛИЧЕСКИЕ КОЛОННЫ



VICTORIA



VENUS



METEOR



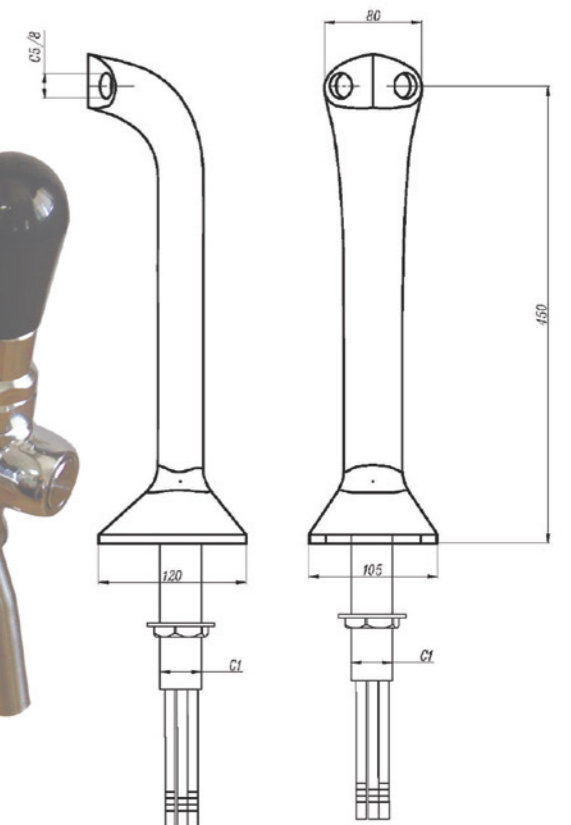
ATLANTA

# METAL TOWERS

## МЕТАЛЛИЧЕСКИЕ КОЛОННЫ



TYPE COBRA LONG



# METAL TOWERS

## МЕТАЛЛИЧЕСКИЕ КОЛОННЫ



ATLANTA

# METAL TOWERS

## МЕТАЛЛИЧЕСКИЕ КОЛОННЫ



VICTORIA



VENUS



METEOR



ATLANTA DREAM



DUGA

# TYPE COBRA

## ТИП КОБРА



# METAL TOWERS

## МЕТАЛЛИЧЕСКИЕ КОЛОННЫ



Brigitte



Brigitte



Roxy



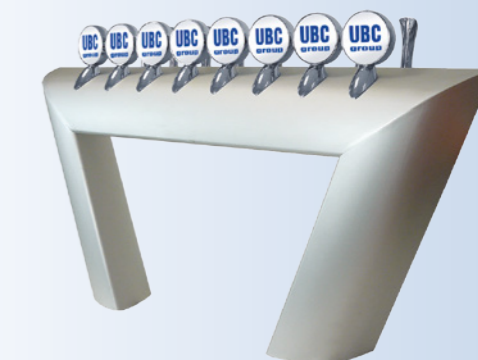
Panther



Colonna T



Fusion



Fusion



Colonna T



Colonna T



Spagna Iced



Anversa



Faro



Laser



Sax

# CERAMIC TOWERS

## КЕРАМИЧЕСКИЕ КОЛОННЫ



# EXCLUSIVE TOWERS

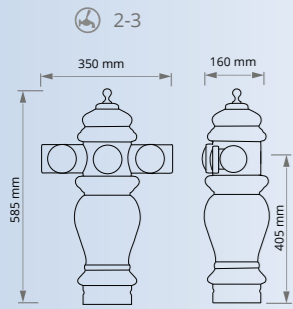
## ЭКСКЛЮЗИВНЫЕ КОЛОННЫ

<p><b>Rada</b> Рада</p>		<p><b>Capital</b> Капитель</p>		<p><b>Fire faucet</b> Пожарный кран</p>	
<p><b>Siberian crown</b> Сибирская корона</p>		<p><b>Loco</b> Локо</p>		<p><b>Glass 1</b> Бокал 1</p>	
<p><b>Ivet</b> Ивет</p>		<p><b>Kalnapilis</b> Калнапилис</p>		<p><b>Dana</b> Дана</p>	

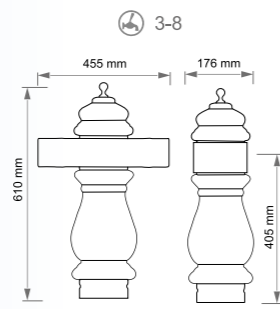
# EXCLUSIVE TOWERS

## ЭКСЛЮЗИВНЫЕ КОЛОННЫ

**Avlis**  
Авлис



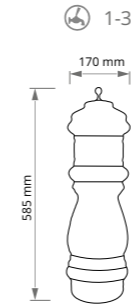
**Silva with a balcony**  
Сильва с балконом



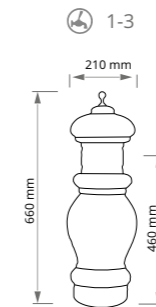
# CLASSIC TOWERS

## КЛАССИЧЕСКИЕ КОЛОННЫ

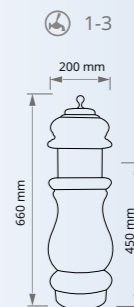
**Arkadia**  
Аркадия



**Vega**  
Вега



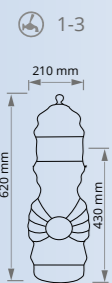
**Kromba**  
Кромба



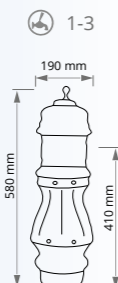
# PREMIUM TOWERS

## ПРЕМИУМ КОЛОННЫ

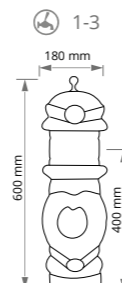
**Arkadia A**  
Аркадия А



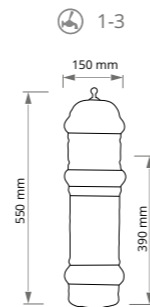
**Silva B**  
Сильва Б



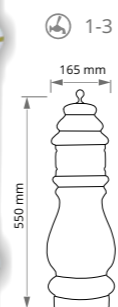
**Dionysus**  
Дионис



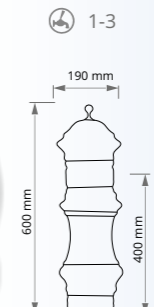
**Linda**  
Линда



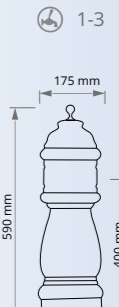
**Mallow**  
Мальва



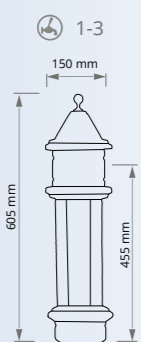
**Venus**  
Венера



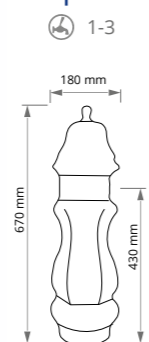
**Crown**  
Крона



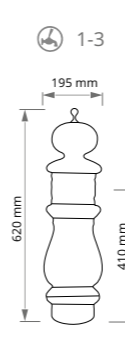
**Castle**  
Кастле



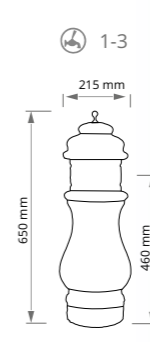
**Prima**  
Прима



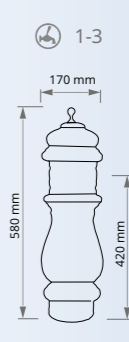
**Brita**  
Брита



**Lada**  
Лада



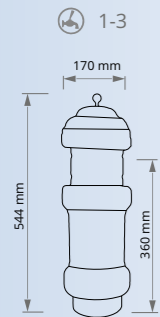
**Silva**  
Сильва



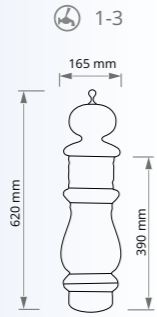
# CLASSIC TOWERS

## КЛАССИЧЕСКИЕ КОЛОННЫ

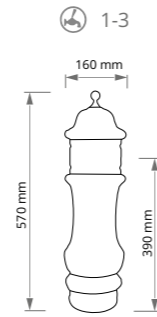
**Una**  
Уна



**Silva P**  
Сильва П



**Rondo**  
Рондо



# ACCESSORIES

## КОМПЛЕКТУЮЩИЕ

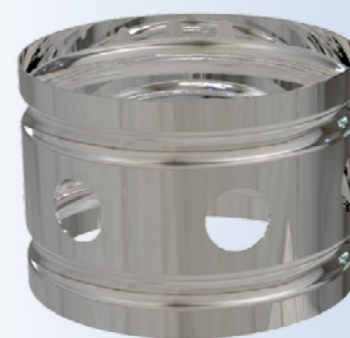
**Horizontal rack**  
Горизонтальная стойка

☎ 2-5



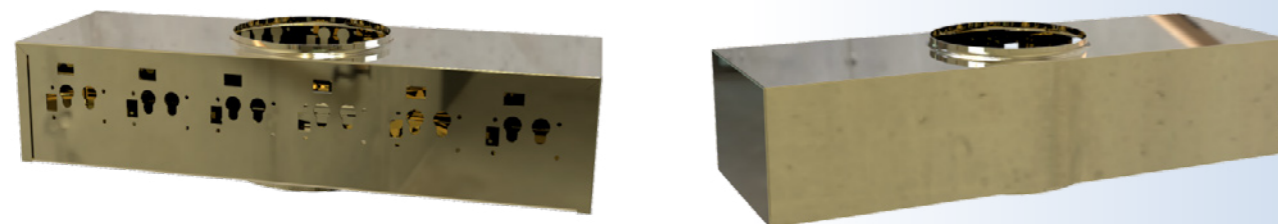
**Decorative ring**  
Кольцо декоративное

☎ 1-3



**Balcony**  
Балкон

☎ 3-8



# CERAMIC TAP HANDLES

## РЫЧАГИ ДЛЯ ПИВНЫХ КРАНОВ





# CERAMIC TAP HANDLES

## РЫЧАГИ ДЛЯ ПИВНЫХ КРАНОВ

# CERAMIC TAP HANDLES

## РЫЧАГИ ДЛЯ ПИВНЫХ КРАНОВ

A-3



A-4



A-5



A-10



A-36



A-41



A-42



A-43



A-11



A-17



A-18



A-22



A-46



A-47



A-48



A-49



A-23



A-26



A-27



A-29



A-51



A-53



A-57



A-58



A-30



A-31



A-32



A-33



A-59



A-60



A-62



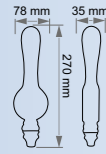
A-63



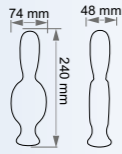
# CERAMIC TAP HANDLES

## РЫЧАГИ ДЛЯ ПИВНЫХ КРАНОВ

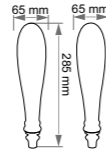
A-64



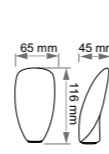
A-72



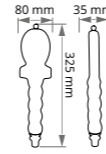
A-75



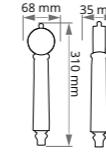
A-78



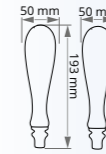
A-113



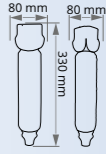
A-122



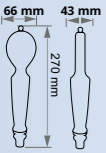
A-123



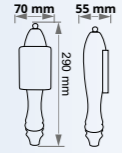
A-124



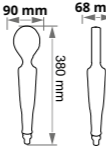
A-83



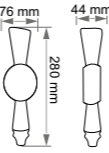
A-85



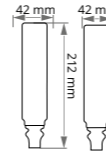
A-87



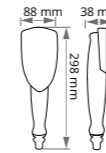
A-96



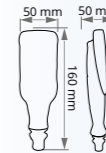
A-128



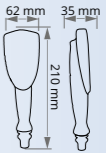
A-133



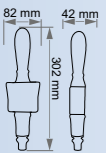
A-140



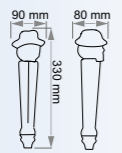
A-142



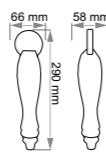
A-97



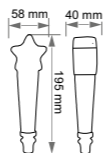
A-102



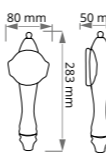
A-103



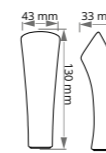
A-104



A-143



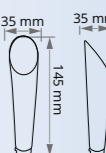
A-148



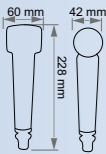
A-149



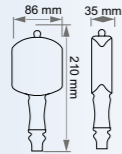
A-150



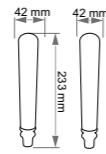
A-105



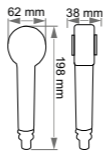
A-107



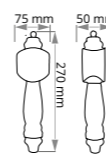
A-108



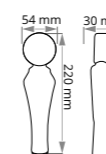
A-109



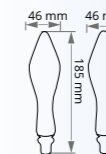
A-151



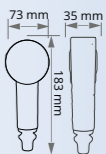
A-153



A-154



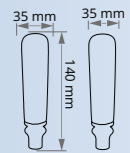
A-157



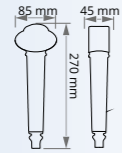
# CERAMIC TAP HANDLES

## РЫЧАГИ ДЛЯ ПИВНЫХ КРАНОВ

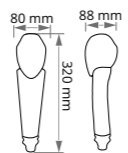
A-163



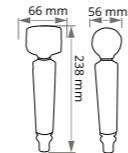
A-169



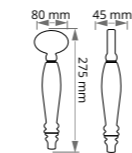
A-175



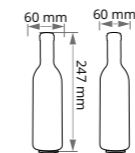
A-178



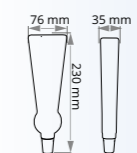
A-220



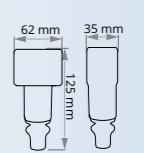
A-223



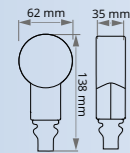
A-228



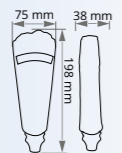
A-238



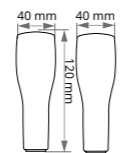
A-179



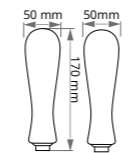
A-186



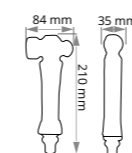
A-197



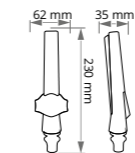
A-200



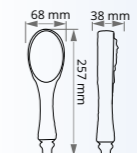
A-249



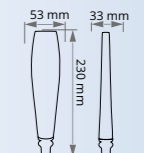
A-264



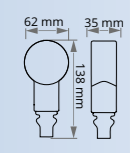
A-278



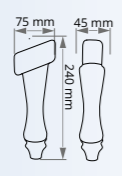
A-280



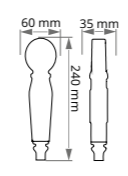
A-201



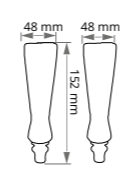
A-204



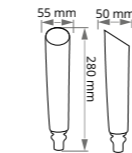
A-205



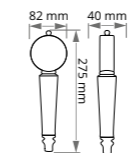
A-207



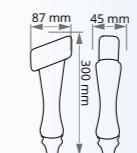
A-281



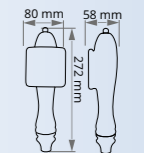
A-285



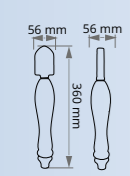
A-287



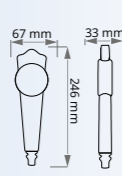
A-291



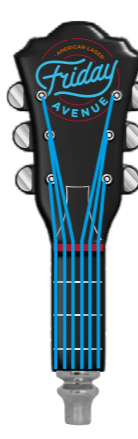
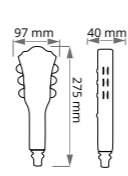
A-210



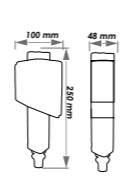
A-213



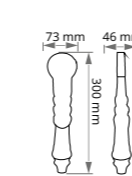
A-214



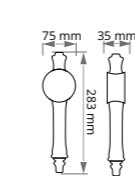
A-219



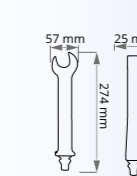
A-302



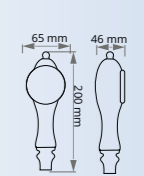
A-314



A-319



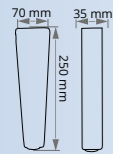
A-325



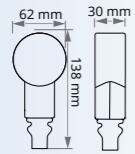
# CERAMIC TAP HANDLES

## РЫЧАГИ ДЛЯ ПИВНЫХ КРАНОВ

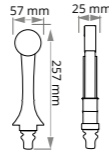
A-339



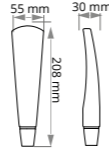
A-344



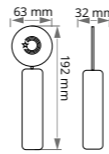
A-347



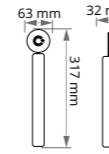
A-401



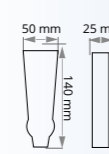
WD-1



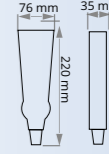
WD-2



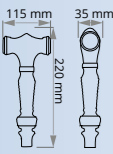
WD-3 A



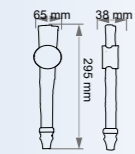
WD-3 B



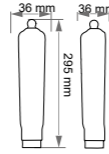
A-402



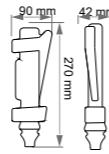
A-404



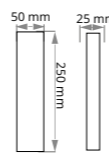
A-405



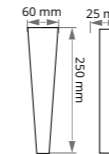
A-413



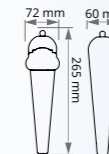
WD-4



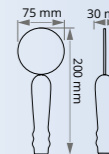
WD-5



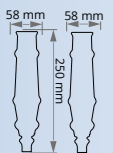
WD-6



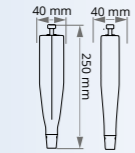
WD-7



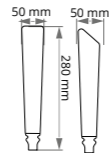
A-414



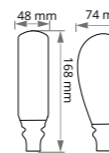
A-421



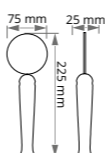
A-423



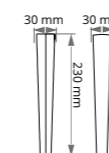
A-425



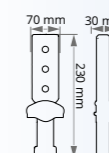
WD-8



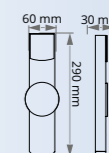
WD-9



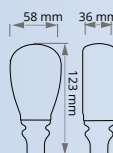
WD-10



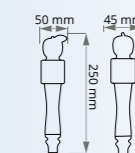
WD-11



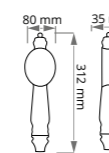
A-426



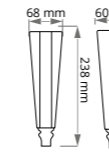
A-429



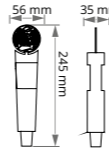
A-431



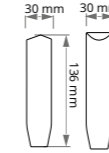
A-438



WD-12



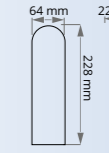
WD-14



WD-19



WD-23



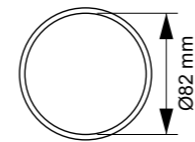
# BEER TAPS ПИВНЫЕ КРАНЫ



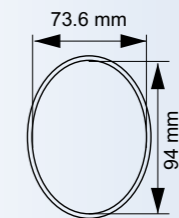
# MEDALLIONS МЕДАЛЬОНЫ



for round fish-eye lens plaque

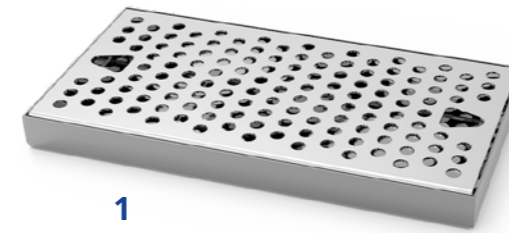


for round silicon plaque

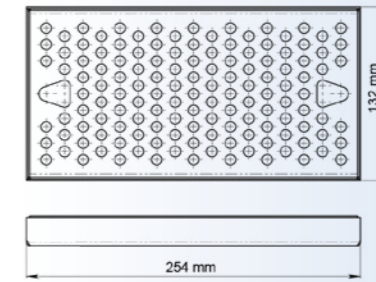


for oval silicon plaque

# DRIP TRAYS КАПЛЕБОРНИКИ



1

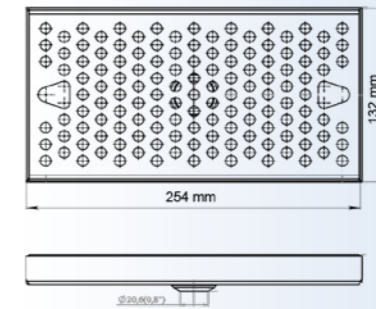


size

254 x 183	254 x 132
305 x 183	305 x 132
381 x 183	381 x 132
406 x 183	406 x 132
508 x 183	508 x 132
610 x 183	610 x 132
762 x 183	762 x 132



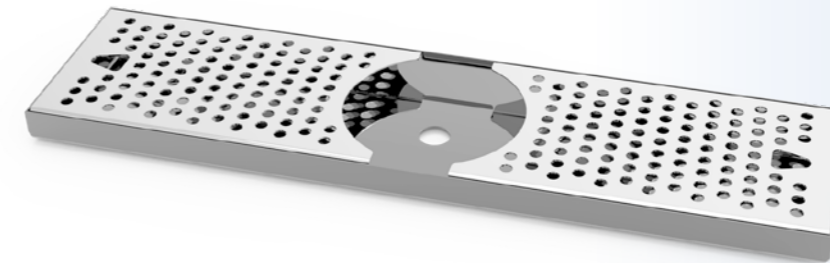
2



size

254 x 183	254 x 132
305 x 183	305 x 132
381 x 183	381 x 132
406 x 183	406 x 132
508 x 183	508 x 132
610 x 183	610 x 132
762 x 183	762 x 132
914 x 183	914 x 132
1153 x 183	1153 x 132
1213 x 183	1213 x 132

sink



3

size

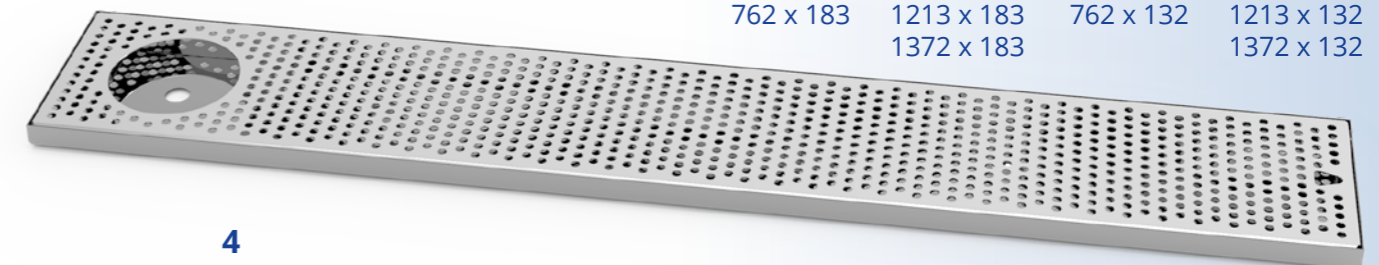
508 x 183	508 x 132
610 x 183	610 x 132
762 x 183	762 x 132
914 x 183	914 x 132
1153 x 183	1153 x 132
1213 x 183	1213 x 132
1372 x 183	1372 x 132

sink

size

508 x 183	914 x 183	508 x 132	914 x 132
610 x 183	1153 x 183	610 x 132	1153 x 132
762 x 183	1213 x 183	762 x 132	1213 x 132
	1372 x 183		1372 x 132

size

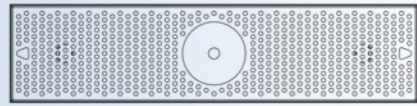
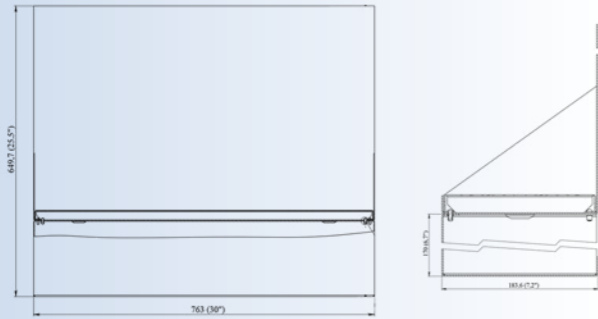


4

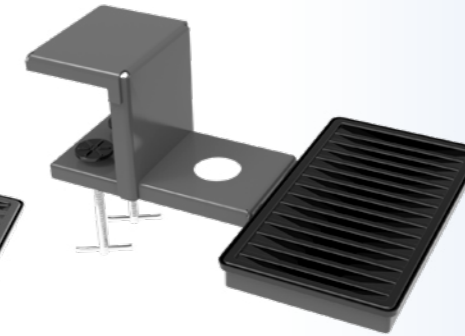
# DRIP TRAYS КАПЛЕСБОРНИКИ

# CLAMP

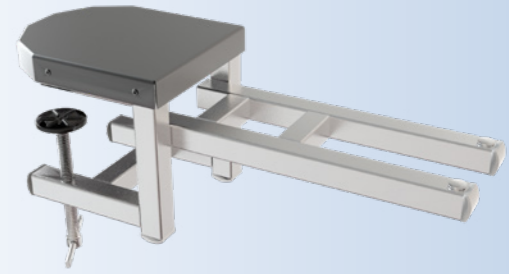
5) hanging drip tray



35.00.00.00

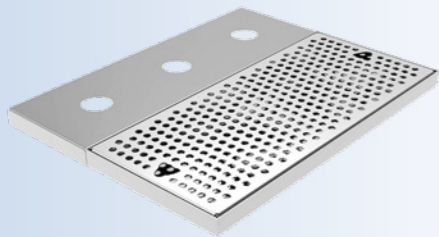


37.00.00.00-07

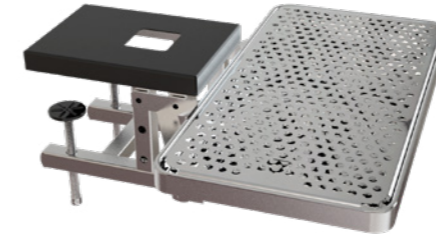


40.00.00.00

6) drip tray for Gefest



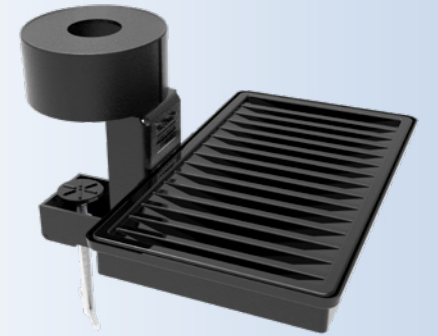
7) drip tray for Rif



39.00.00.00-02



41.00.00.00-01



41.00.00.00-05

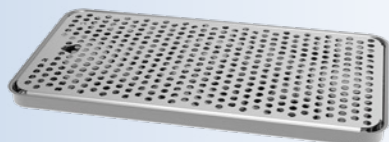
8) drip tray for Arcada



9) drip tray for Terra



10) stamped drip tray



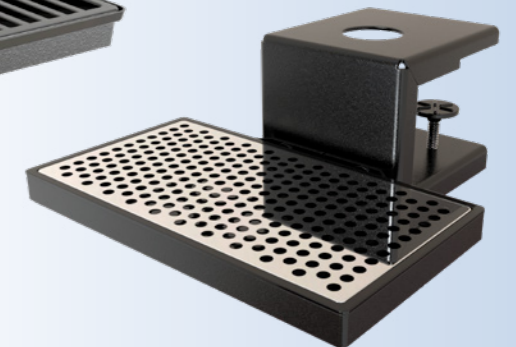
size

404x210x20mm;  
300x180x20mm

11) plastic drip tray



43.00.00.00



33 00 00 СБ



42.00.00.00

# DRIP TRAYS



water spray



drain





**NOTES**

**ДЛЯ ЗАМЕТОК**